

Important Safeguards

- Do not use this product if you have not received a formal induction from your therapist. As a primary carer please ensure you are aware of your responsibility relating to the safe use of this product
- This product has been prescribed by the Therapist or practitioner who should have adjusted the Teddy to meet the child's need. If this product has not been adjusted by the therapist please do not use it.
- It is imperative that the product log form is completed at the rear of this manual on a regular basis. This form must be used to record setups, changes to the product and scheduled maintenance checks undertaken.
- To validate the warranty it is important that each section of the end user manual is actioned, recorded and initialled each time Teddy is reviewed.
- Please ensure this manual is kept in a safe place.
- CARE, MAINTENANCE AND CLEANING procedures must be followed in this manual to ensure client well being.
- It is imperative as a primary carer that you understand the CORRECT USE of the product and also what is INAPPROPRIATE USE.
- Secure the child using the 45 Deg pelvic strap. Ensure the belt is securely adjusted and fitted each time a child is seated and for changes of clothing for secure fit. Ensure the straps are fitted from under the pelvic supports.
- Please ensure that the product is used on an indoor even surface at floor level.
- Do NOT move Teddy when child is in the product.
- Do not adjust the backrest angle with the child in the seat.
- It is imperative that children are continuously monitored whilst using this equipment. **NEVER LEAVE A CHILD UNATTENDED IN THIS PRODUCT.**



PO.Box 2125 Wolverhampton, WV6 7FB
Tel / Fax +44 (0) 121 523 5004
Tel / Fax +44 (0) 1902 741675
E-mail: enquire@a2u.co.uk
Website : www.a2u.co.uk



Teddy



End User manual

This manual contains essential guidance for School and Home carer. This manual **must** be read thoroughly before using the Teddy.



Do not use this product if you have not received a formal induction from your therapist. As a primary carer please ensure you are aware of your responsibility relating to the safe use of this product

Safety

- It is imperative that children are continuously monitored whilst using this equipment. **NEVER LEAVE A CHILD UNATTENDED IN THIS PRODUCT.**
- If there is the slightest concern regarding the supports, use or function of the product then immediately contact your therapist for advice.
- Please ensure that the product is used on an indoor even surface at floor level.
- Do NOT move Teddy when child is in the product.
- Do not adjust the backrest angle with the child in the seat.
- Small parts if loose will be a potential hazard for small children.
- Do not allow other individuals to use, play with, stand on, or lean on the Teddy.
- Keep products away from sources of heat such as naked flames, cigarettes, open fires, heaters, radiators etc.
- Always use all of the positioning straps provided.
- Teddy is not a car seat.

WARNING

- Secure the child using the 45 Deg pelvic strap. Ensure the belt is securely adjusted and fitted each time a child is seated and for changes of clothing for secure fit. Ensure the straps are fitted from under the pelvic supports.
- The safety advice and directions in this manual cannot cover all eventualities and unforeseen situations that may occur. It must be understood that common sense, general caution and care are factors that cannot be built into this product. These are factors which the person actually using this product must assume responsibility for.

Warranty

- a2u warrants that equipment sold by a2u will be free of all defects in material and workmanship for a period of 2 years from the date of purchase. We will not be held responsible for any damage, injury due to misuse or modification of our products.
- a2u will repair or replace, at our discretion, any equipment or parts proving defective within the terms and period of this warranty.
- If any part of the equipment is found to be defective within the terms and period of this warranty a2u will, at its own discretion, repair or replace it.
- For advice on the use of this product please phone our after sales line on + 44 (0) 121 523 5004.

Product Induction Form

This form **must** be completed on issue or re-issue of the product

Child's Name	
Therapist Name	
Address	
Telephone	
Primary Carer's Name	
Product Issue Date	
Product Serial No.	
Product Purchase Date	

Induction Check List

Please ensure that the following sections are covered with the primary carer before the product is issued. Please initial each box when instructing carer / end user through the induction process.

Safety Information	<input type="checkbox"/>	Induction Given By _____
Daily User Guide	<input type="checkbox"/>	
Care & Maintenance	<input type="checkbox"/>	Induction Received By _____
Cleaning	<input type="checkbox"/>	
Product Log Updated	<input type="checkbox"/>	Date _____

Getting Started

Intended Use

Teddy has been designed to complement the development of the youngster for which it has been prescribed by the health care professional.

It is imperative that Teddy is used correctly (as per instructions) and maintained regularly (as per instructions).

Young children using this equipment should be continuously monitored and not left unattended.

Using the Teddy

- Before seating the child in Teddy always check the stability of the seat e.g check that both seat and backrest are secure. This seat is a floor sitter and should only be used on a flat level floor.
- Seat the child as directed by the Therapist/Prescriber and IMMEDIATELY secure pelvic strap. This strap is a pelvic strap and not a waist / lap strap and should be placed at a 45 Deg across child's pelvic. This strap MUST always be a snug fit to maintain and secure correct position. Ensure the pelvic strap is inside/under and NOT over the pelvic supports.
- If a jacket is supplied ensure that the lower straps are fitted at pelvic height. The shoulder straps should be fitted snugly over the shoulders and fed between back rest and and the headrest and into the plastic buckles and secured. DO NOT USE IN A BIB POSITION as this may create a hazard
- Should you wish to change the backrest angle, please first CHECK with your therapist / prescriber for advice and direction to ensure child safety and well being. **DO NOT ADJUST THE SEAT OR BACKREST WITH THE CHILD SEATED IN THE CHAIR.**
- Do NOT move Teddy while child is seated in it.
- It is imperative that children are continuously monitored whilst using this equipment. **NEVER LEAVE A CHILD UNATTENDED IN THIS PRODUCT.**
- Please refer to Using Teddy section on pages 5 to7 for further information.

Teddy Specification

Age	SIZE A		SIZE B	
	6 mths to 3 yrs		3 yrs to 6 yrs	
	mm	inches	mm	inches
Seat Depth	250	10	300	12
Seat Width				
Min	170	6.5	220	9
Max	210	8.5	260	8.5
Backrest Height	260	10.5	320	13
Backrest to top of Headrest	480	19	550	22
Overall (Upright)				
Width	320	13	400	16
Length	500	20	600	24
Tray Size	530x530	21x21	600x600	24x24
Seat to Backrest Angle	15° Prone to Horizontal			

- Teddy A is suitable for a child 6 months to 3 Years (Max Weight 25Kg).
- Teddy B is suitable for a child 3 to 6 Years (Max Weight 35Kg).

Maintenance

As a primary carer it is your responsibility to ensure the product is correctly used on a day to day basis. Please ensure that following checks are regularly undertaken. The frequency of the check is only a minimum and should be adjusted depending on the environment in which the equipment functions. Do not use this product if you suspect it is faulty or broken. Please contact your Therapist for assistance.

Daily Checks

- Check that supports and straps are securely fixed.
- Check that the pelvic strap fits the child snugly.
- Check that the backrest angle fixing is secure and tight.
- Check all upholstery for wear and tear.
- Check framework for wear and tear, splinters, breaks.
- If appropriate check the Teddy table for all of the above.

Monthly Checks

The monthly check, again the frequency is only a minimum and should be adjusted depending on the environment in which the equipment functions. As this check is a more in-depth check a suitably competent individual should be nominated by/on behalf of the prescriber.

- Check that supports and straps are functionally correct and securely fixed.
- Check for missing or worn bolts/fixings.
- Check straps for fraying and missing or broken buckles.
- Check all upholstery for wear and tear.
- Check framework for wear and tear, splinters, breaks.
- Check the overall structure of the Teddy for any signs of fatigue or damage.
- If appropriate check the Teddy table for all of the above.
- Ensure product log is updated.

Cleaning

- Metalwork and coated parts can be wiped with soapy water or antibacterial spray. Please dry the product thoroughly. Please do NOT use solvents, abrasive cleaners, caustic soda, sodium hypochlorite and organic solvents.
- Padded seat, back and components should be wiped regularly with soapy water or antibacterial spray. Please dry material thoroughly after wiping. Please do not soak the fabric.

Using Teddy



Pelvic Strap Adjustment

Check that the pelvic strap is securely fixed by pulling each strap forward over the seat. If the strap is too loose and does not fit securely/snugly around the child, alter the strap before use as follows:-

Place buckle in the centre of the seat width. Follow each strap to the back of the Teddy to the fixing ❶. Take/work each strap individually by lengthening /shortening the webbing through the tri-glide as required. Please note that this is a pelvic strap and not a lap/waist strap and should be placed at a 45 Deg angle across the child's pelvic. The pelvic strap must be a snug fit to secure the child. A loose pelvic strap is a hazard and will not keep the child in position. Also ensure the straps are fed under the pelvic supports.



Backrest Adjustment

Loosen the 2 wing nuts (2 to 3 times) on either side of the back of the seat ❶. This will loosen the 2 joints and allows the backrest to freely move both backwards and forwards.

Choose the suitable backrest angle / position and tighten both wing nuts on either side of the seat ❶. Check that the backrest is secure and that the 2 joints and wing nuts are securely fastened.

Do NOT leave child unattended in the Teddy seat. Always use all the positioning straps provided.
Do NOT adjust the seat with child in the seat

Using Teddy



1



Headrest

To fit the headrest place the headrest stem into the slot between the blue backrest and the plastic outer panel **1**. Make the two allen screws secure with the allen key supplied. Ensure that each of the two side head supports is positioned and secured by the two allen screws on each one **2**.



Pommel

The pommel can be removed for easy transfer by undoing the wing nut.



1



2



Tray

Teddy table is designed to complement the Teddy with adjustable height and angle. To adjust the height loosen the 2 black wing nuts on each leg, position and secure. To angle, loosen the 2 levers on each side of the table, angle and secure.

Note: This table is a nursery table to provide a surface for the Teddy user only. **DO NOT SIT/LEAN/STAND ON THIS TABLE.**

Do **NOT** leave child unattended in the Teddy seat. Always use all the positioning straps provided. Do **NOT** adjust the seat with child in the seat

Using Teddy



1



2



Dynamic Zip Jacket

A jacket can be used on the Teddy. The jacket is secured by 4 fixing straps. The two lower straps are secured on the u stability bar **2**. Take /work each strap individually by lengthening /shortening the webbing through the tri-glide as required. The two shoulder straps are secured through two flip-lock buckles located on each side of the rear of the backrest **1**. The jacket should always be used in conjunction with the pelvic-strap for secured positioning. The shoulder straps should be fitted snugly over the shoulders then fed between the backrest and headrest and into the plastic buckles and secured. The 2 lower straps have D ring pulls for a snug fit. **NOT to be used in bib position as this will create a hazard.**

Groin Harness

The child is seated on top of the groin harness and the 2 padded straps are fed between and over the legs and secured at the pelvic. To remove the child from the harness undo the buckles over each leg **2**.

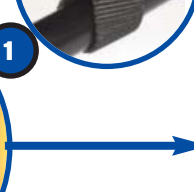
HOW TO FIT & ADJUST GROIN HARNESS
The 2 padded long straps are secured on the u stability bar. Take /work each strap individually by lengthening /shortening the webbing through the tri-glide as required. **1**. It is essential that this fitting is snug. Once the desired position is attained small adjustments can be made via the webbing and the buckle fixing.



1



2



Do **NOT** leave child unattended in the Teddy seat. Always use all the positioning straps provided. Do **NOT** adjust the seat with child in the seat