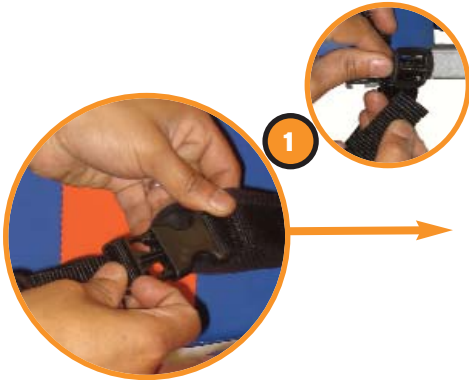


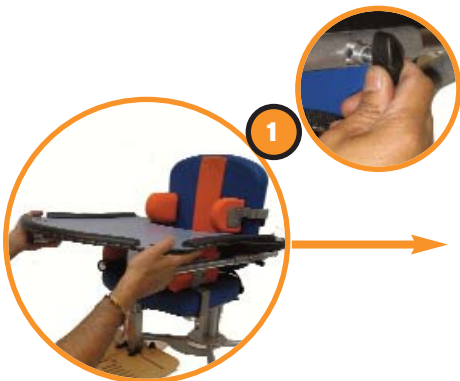
This guide only shows adjustments used on a daily basis, please refer to the End User manual for further information.

Pelvic Strap Adjustment



It is imperative that the pelvic buckle is positioned in the centre of the seat. Once the buckle is fitted together, pull the D loops to enhance a more secure fitting. To release place fingers under each side of buckle and gently pull from side to side. This will release the side webbing and enable easier access. The pelvic strap is designed to fit across the pelvis NOT around the waist. The length of the lapstrap can be adjusted through the triglide under the seat. ①

- Readjust strap to allow for changes in clothing and child.
- Check that the straps go under the pelvic support and that they fit snugly at ALL times to maintain correct seating position.

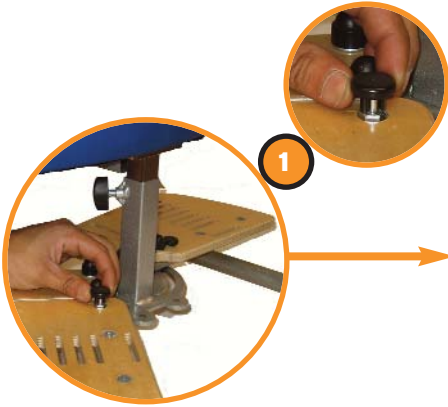


Tray & Armrest Adjustment

The tray slides into the round tubing on the armrest. The wing knob on the side of the armrest locks the tray in place ①.

Do not leave child unattended in Nano.
Always use positioning straps provided.
Do NOT adjust the seat with child in the seat.

Footplate



Nano footrest is designed to swing away to assist transfer. To swing the footplate back, pull and rotate the two plungers located on either side of the frame, ❶. Once the plungers are in the outwards position the footplate can be swung away. To relocate, rotate the footplate towards the middle and lock the two plungers so they snap back into an inward position. Please ensure both the plungers are completely in an inward position after each transfer.

Foot Straps



To adjust the position of the foot and ankle straps, simply select the most appropriate slot for position and feed the straps through.

Dynamic Zip Jacket



The shoulder straps are fitted by two flip up buckles at the top of the backrest ❷. The lower straps are fitted in the desired position to the lapstrap fixing plate ❶. Pull the D loop on the lower straps to tension the jacket. The jacket is removed by unzipping and then removing the two upper buckles on the backrest. When putting jacket on, fasten the zip first, pull on D ring to ensure a secure fit as low as possible on the torso. Lastly secure webbing. Check that jacket is fitted low down so that material does not ride up towards child's throat.



- Regularly check seat and supports are secure and in good condition.
- Please ensure the Nano is used on an even level surface at floor level only. If the chair is to be pulled over a small incline it is recommended that the chair is pulled backwards.
- It is essential that Nano is cleaned regularly so as to not impede function and to remain hygienic.
- The covering can be wiped with mild detergent: please do not use bleach or abrasive solvent cleaners. Keep castors free from grime and loose threads which may impede their function.
- Always ensure that the straps and supports are fitted as directed and castors are locked when the chair is stationary.
- Check and request adjustment of supports at regular intervals to accommodate changes in development and growth.
- It is imperative that children are continuously monitored whilst using special needs equipment.

Do not leave child unattended in Nano.
Always use positioning straps provided.
Do NOT adjust the seat with child in the seat.



PO.Box 2125
Wolverhampton, WV6 7FB.
Tel/Fax 0121 523 5004
Tel/Fax 01902 741675.
E-mail: enquire@a2u.co.uk,
Website: www.a2u.co.uk

Serial No : _____

Date : _____

Version 1



